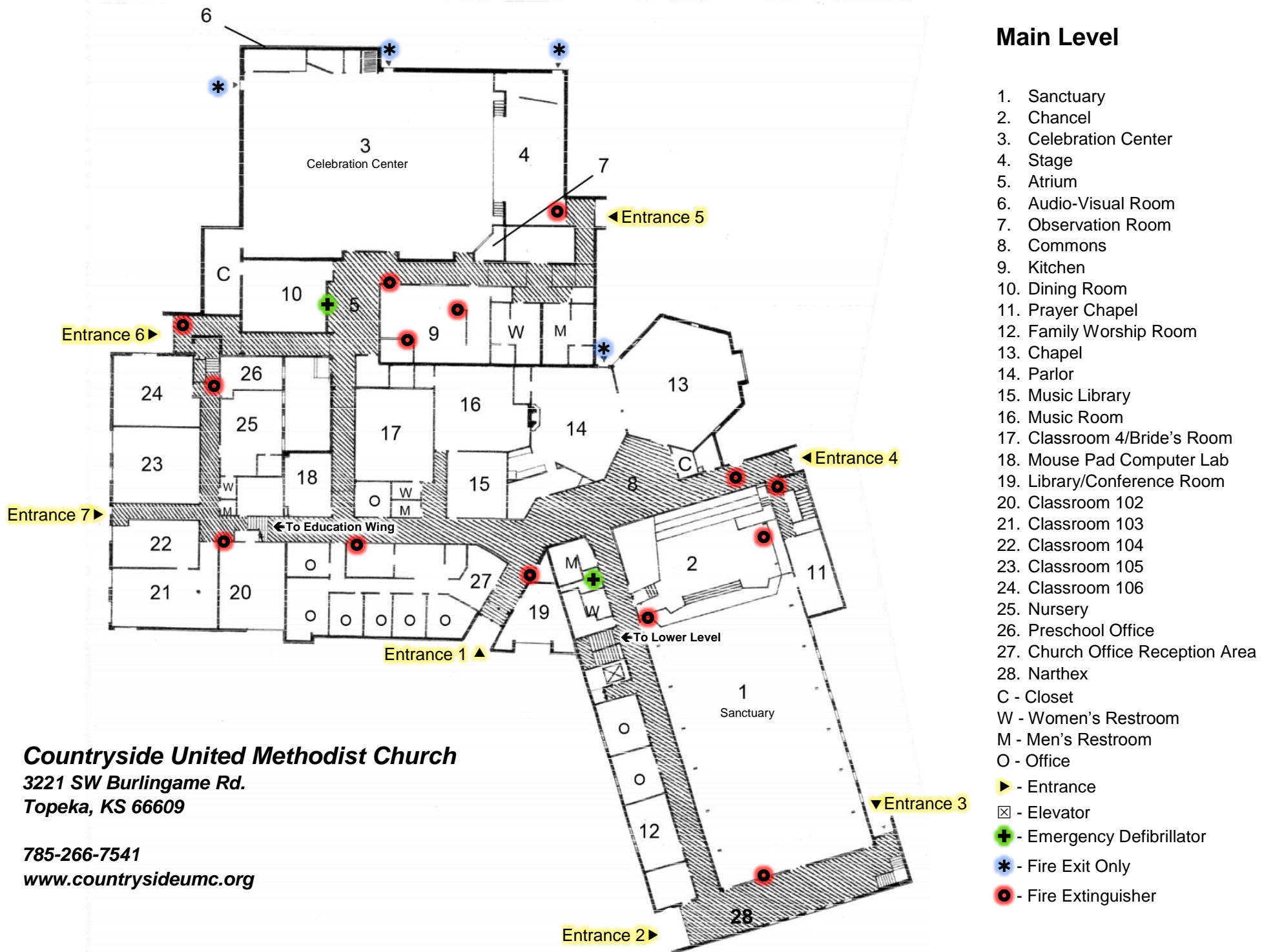


## Main Level

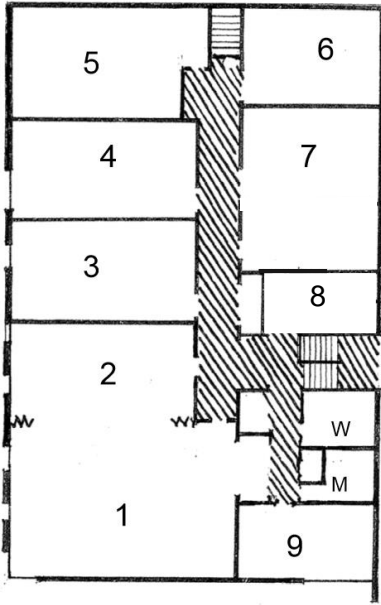


- 1. Sanctuary
- 2. Chancel
- 3. Celebration Center
- 4. Stage
- 5. Atrium
- 6. Audio-Visual Room
- 7. Observation Room
- 8. Commons
- 9. Kitchen
- 10. Dining Room
- 11. Prayer Chapel
- 12. Family Worship Room
- 13. Chapel
- 14. Parlor
- 15. Music Library
- 16. Music Room
- 17. Classroom 4/Bride's Room
- 18. Mouse Pad Computer Lab
- 19. Library/Conference Room
- 20. Classroom 102
- 21. Classroom 103
- 22. Classroom 104
- 23. Classroom 105
- 24. Classroom 106
- 25. Nursery
- 26. Preschool Office
- 27. Church Office Reception Area
- 28. Narthex
- C - Closet
- W - Women's Restroom
- M - Men's Restroom
- O - Office
- ▶ - Entrance
- ⊠ - Elevator
- ⊕ - Emergency Defibrillator
- \* - Fire Exit Only
- - Fire Extinguisher

**Countryside United Methodist Church**  
 3221 SW Burlingame Rd.  
 Topeka, KS 66609

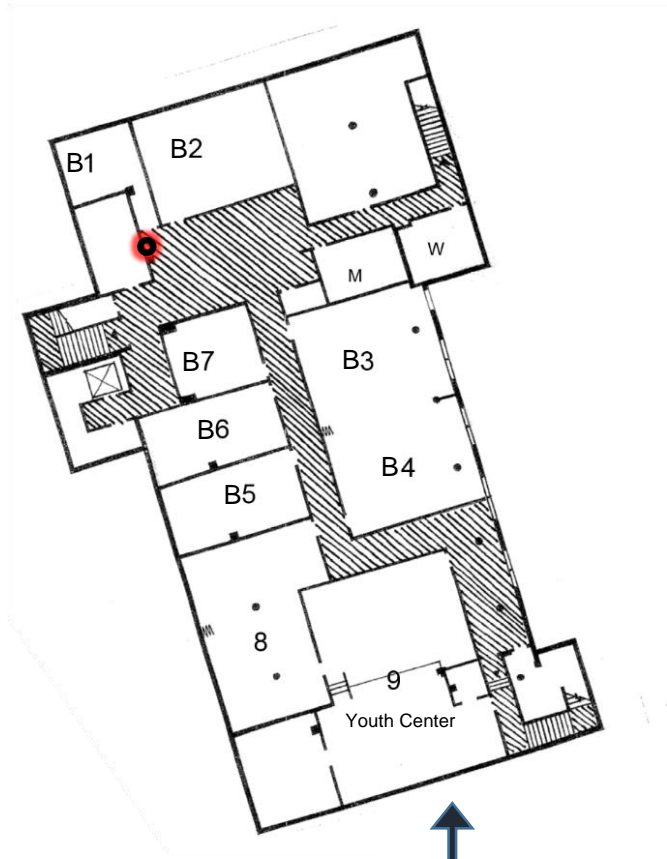
785-266-7541  
[www.countrysideumc.org](http://www.countrysideumc.org)

### Upper Level of Education Wing



- 1. Classroom 207
- 2. Classroom 208
- 3. Classroom 209
- 4. Classroom 210
- 5. Classroom 211
- 6. Classroom 212 (Tweens Room)
- 7. Classroom 213
- 8. Storage
- 9. Teacher's workroom

### Lower Level (Below Sanctuary)



- B1. Classroom B1
- B2. Classroom B2
- B3. Classroom B3
- B4. Classroom B4
- B5. Classroom B5
- B6. Classroom B6
- B7. Classroom B7
- 8. Junior High Room
- 9. Youth Center